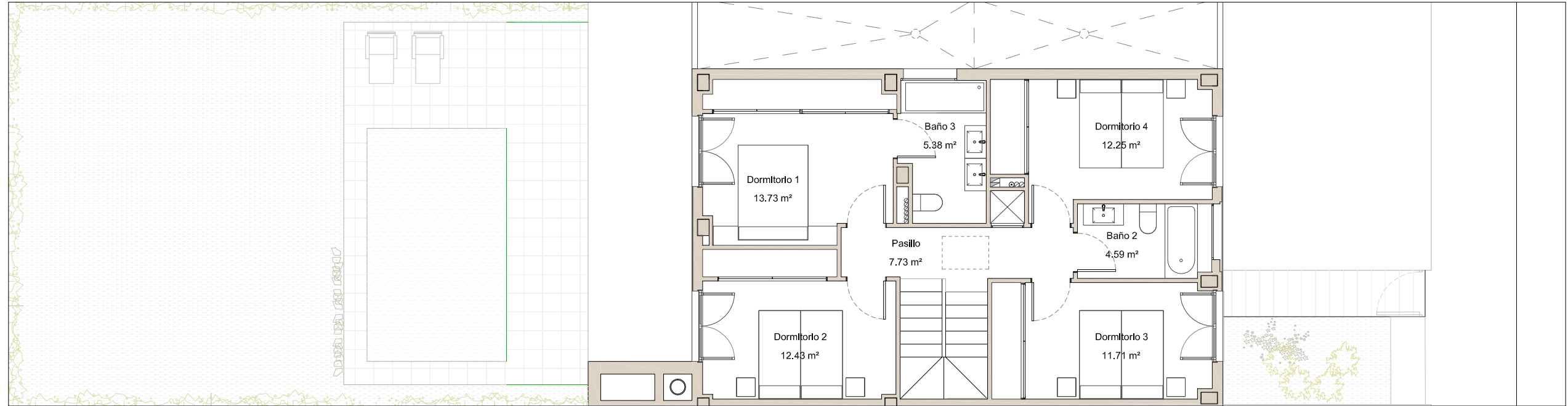


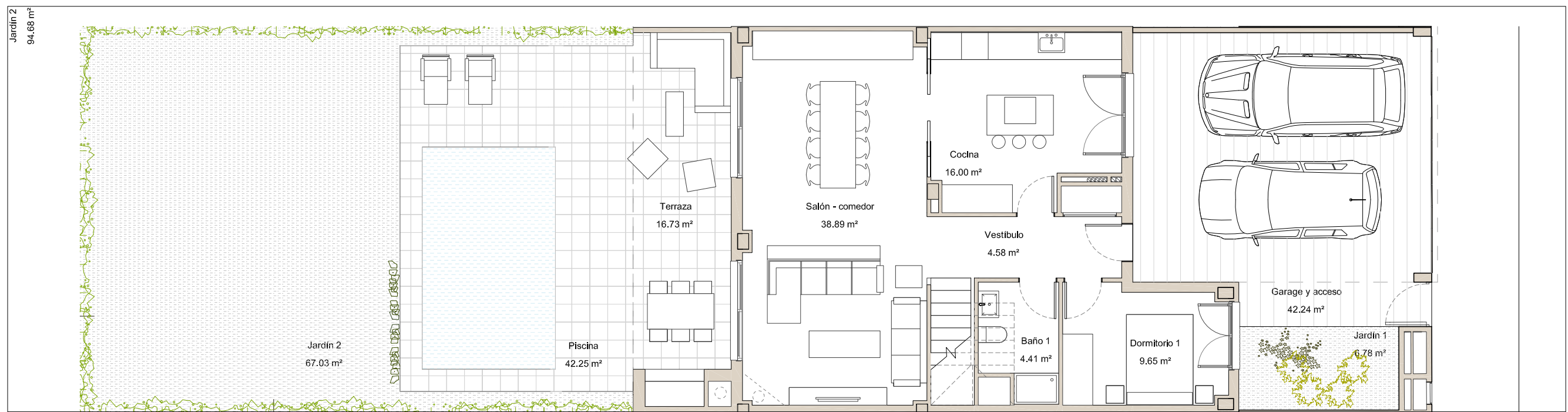


VILLAS DEL PLANO

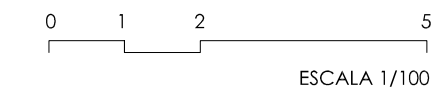
CUARTE DE HUERVA



PLANTA PRIMERA



PLANTA BAJA



Cerrada	
Salón - comedor	38.89 m ²
Vestíbulo	4.58 m ²
Cocina	16.00 m ²
Dormitorio 1	9.65 m ²
Baño 1	4.41 m ²

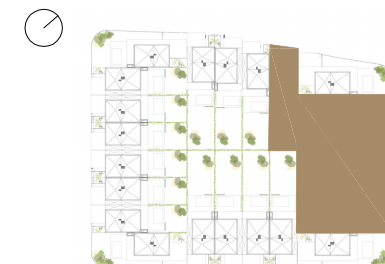
Baño 3	5.38 m ²
Dormitorio 4	12.25 m ²
Baño 2	4.59 m ²
Dormitorio 3	11.71 m ²
Pasillo	7.73 m ²
Dormitorio 2	12.43 m ²
Dormitorio 1	13.73 m ²

Abierta	
Terraza	16.73 m ²
Piscina	42.25 m ²

Exterior	
Garaje y acceso	42.24 m ²
Jardín 1	6.78 m ²
Jardín 2	67.03 m ²



SUP. ÚTIL CERRADA	141.36 m ²
SUP. ÚTIL ABIERTA	58.97 m ²
SUP. ÚTIL TOTAL	200.33 m ²



UNIFAMILIAR

VP2/6 - 4d